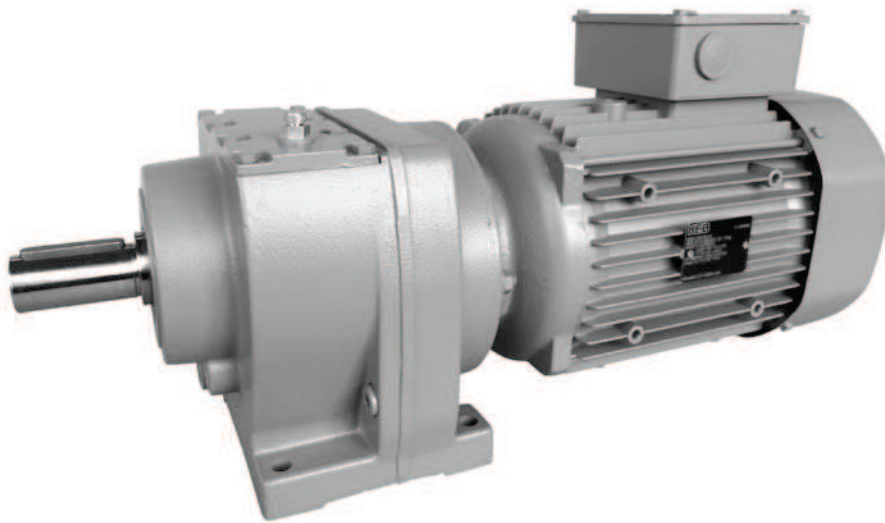
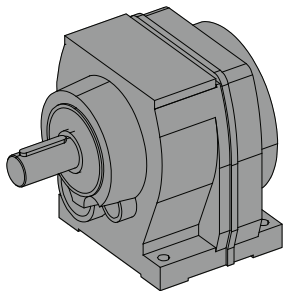


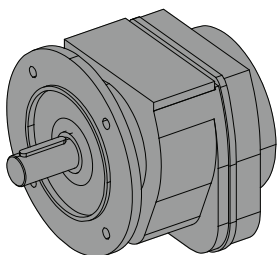
Coaxiale Tandwiel Reductoren G



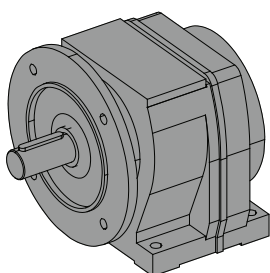
Uitvoering



Voetuitvoering
Voorbeeld: G02A



Flensuitvoering
Voorbeeld: G33C



Voet-flensuitvoering
Voorbeeld: G22E

Selectietabel - Reductoren

i	n2 [1/min] n1=1400 1/min	T2max [Nm]	P1max [kW]
---	--------------------------------	---------------	---------------

G03

72.52	19	60	0.12
61.26	23	60	0.14
52.38	27	60	0.17
45.19	31	60	0.19
39.24	36	60	0.22
34.25	41	60	0.26
29.57	47	60	0.30
25.51	55	60	0.34
22.15	63	60	0.40
19.33	72	60	0.45

G02

16.97	82	60	0.52
14.34	98	60	0.61
12.26	114	60	0.72
10.58	132	60	0.75
9.18	152	60	0.75
8.02	175	60	0.75
7.02	199	60	0.75
6.04	232	59	0.75
5.21	269	56	0.75
4.52	310	53	0.75
3.95	355	49	0.75
3.46	405	47	0.75

G13G03

6085.3	0.23	117	<0.05
5140.9	0.27	117	<0.05
4395.3	0.32	117	<0.05
3791.8	0.37	117	<0.05
3293.2	0.43	117	<0.05
2874.3	0.49	117	<0.05
2481.0	0.56	117	<0.05
2140.3	0.65	117	<0.05
1858.8	0.75	117	<0.05
1622.4	0.86	117	<0.05

G13G02

1424.2	0.98	117	<0.05
1203.2	1.2	117	<0.05
1028.7	1.4	117	<0.05
887.43	1.6	117	<0.05
770.74	1.8	117	<0.05
672.72	2.1	117	<0.05
589.22	2.4	117	<0.05
506.43	2.8	117	<0.05
436.89	3.2	117	<0.05
379.44	3.7	117	<0.05
331.18	4.2	117	0.05
290.08	4.8	117	0.06
251.28	5.6	117	0.07
219.23	6.4	117	0.08
192.31	7.3	117	0.09
169.38	8.3	117	0.10
145.94	9.6	117	0.12
127.83	11	117	0.13

i	n2 [1/min] n1=1400 1/min	T2max [Nm]	P1max [kW]
---	--------------------------------	---------------	---------------

G13

115.34	12	117	0.15
97.78	14	117	0.18
83.91	17	117	0.20
72.69	19	117	0.24
63.42	22	117	0.27
55.63	25	117	0.31
49.00	29	117	0.35
43.09	32	117	0.40
36.98	38	117	0.46
32.03	44	117	0.54
27.95	50	117	0.61
24.52	57	117	0.70
21.59	65	117	0.79

G12

24.88	56	117	0.69
21.25	66	117	0.81
18.39	76	117	0.93
16.08	87	117	1.07
14.16	99	117	1.21
12.56	111	117	1.37
11.19	125	117	1.50
10.04	139	112	1.50
8.77	160	106	1.50
7.68	182	100	1.50
7.06	198	97	1.50
6.22	225	92	1.50
5.51	254	87	1.50
4.91	285	83	1.50
4.41	318	79	1.50
3.85	364	74	1.50
3.37	415	69	1.50

G22G13

1960.4	0.71	235	<0.05
1661.9	0.84	235	<0.05
1426.3	0.98	235	<0.05
1235.5	1.1	235	<0.05
1078.0	1.3	235	<0.05
945.59	1.5	235	<0.05
832.84	1.7	235	<0.05
732.34	1.9	235	<0.05
628.51	2.2	235	0.05
544.45	2.6	235	0.06
475.02	2.9	235	0.07

G22G12

422.82	3.3	235	0.08
361.24	3.9	235	0.09
312.61	4.5	235	0.11
273.25	5.1	235	0.13
240.74	5.8	235	0.14
213.43	6.6	235	0.16
190.16	7.4	235	0.18
170.71	8.2	235	0.20

i	n2 [1/min] n1=1400 1/min	T2max [Nm]	P1max [kW]
---	--------------------------------	---------------	---------------

G23

153.41	9.1	235	0.22
131.06	11	235	0.26
113.42	12	235	0.30
99.14	14	235	0.34
87.34	16	235	0.39
77.43	18	235	0.44
69.48	20	235	0.49
60.74	23	235	0.56
53.51	26	235	0.64
47.44	30	235	0.72
41.53	34	235	0.82
36.59	38	235	0.93
32.44	43	235	1.05
28.90	48	235	1.18
25.95	54	235	1.32
22.65	62	230	1.49
19.83	71	235	1.72

G22

29.22	48	235	1.17
25.09	56	235	1.36
21.82	64	235	1.57
19.18	73	235	1.78
17.00	82	235	2.01
15.16	92	235	2.25
13.60	103	235	2.51
12.36	113	235	2.76
10.90	128	235	3.00
9.65	145	230	3.00
8.64	162	220	3.00
7.52	186	210	3.00
7.04	199	167	3.00
6.31	222	164	3.00
5.74	244	197	3.00
5.06	277	183	3.00
4.48	312	169	3.00
4.01	349	157	3.00
3.49	401	142	3.00

G23G13

10074	0.14	235	<0.05
8540.3	0.16	235	<0.05
7329.5	0.19	235	<0.05
6349.2	0.22	235	<0.05
5539.5	0.25	235	<0.05
4859.3	0.29	235	<0.05
4279.9	0.33	235	<0.05
3763.4	0.37	235	<0.05
3229.8	0.43	235	<0.05
2797.9	0.50	235	<0.05
2441.1	0.57	235	<0.05
2164.1	0.65	235	<0.05

G33G13

11893	0.12	480	<0.05
10082	0.14	480	<0.05
8652.7	0.16	480	<0.05
7495.5	0.19	480	<0.05
6539.6	0.21	480	<0.05
5736.6	0.24	480	<0.05
5052.5	0.28	480	<0.05
4442.9	0.32	480	<0.05
3813.0	0.37	480	<0.05
3303.0	0.42	480	<0.05
2881.8	0.49	480	<0.05

i	n2 [1/min] n1=1400 1/min	T2max [Nm]	P1max [kW]
---	--------------------------------	---------------	---------------

G33G12

2565.1	0.55	480	<0.05
2191.5	0.64	480	<0.05
1896.5	0.74	480	<0.05
1657.7	0.84	480	<0.05
1460.5	0.96	480	<0.05
1294.8	1.1	480	0.05
1153.6	1.2	480	0.06
1035.6	1.4	480	0.07
903.90	1.5	480	0.08
791.71	1.8	480	0.09
727.68	1.9	480	0.10
641.09	2.2	480	0.11
568.36	2.5	480	0.12
506.40	2.8	480	0.14
454.59	3.1	480	0.16
396.78	3.5	480	0.18
347.53	4.0	480	0.20
310.04	4.5	480	0.23
278.10	5.0	480	0.25
252.75	5.5	480	0.28
222.84	6.3	480	0.32
197.36	7.1	480	0.36

G33

177.27	7.9	480	0.40
152.19	9.2	480	0.46
132.39	11	480	0.53
116.36	12	480	0.61
103.11	14	480	0.69
91.99	15	480	0.77
82.51	17	480	0.86
74.99	19	480	0.94
66.12	21	480	1.07
58.56	24	480	1.21
51.70	27	480	1.37
45.82	31	480	1.54
40.87	34	480	1.73
36.66	38	475	1.90
33.32	42	460	2.02
29.38	48	440	2.20
26.02	54	420	2.37
23.28	60	405	2.55
20.27	69	385	2.79

G32

25.67	55	480	2.75
22.92	61	480	3.08
20.61	68	480	3.43
18.65	75	480	3.79
17.00	82	480	4.16
15.16	92	480	4.66
13.60	103	480	5.2
12.34	113	480	5.5
10.93	128	470	5.5
9.92	141	285	4.18
9.63	145	440	5.5
8.43	166	415	5.5
7.40	189	390	5.5
7.30	192	330	5.5
6.54	214	320	5.5
5.94	236	325	5.5
5.26	266	305	5.5
4.63	302	290	5.5
4.06	345	275	5.5
3.56	393	260	5.5

i	n2 [1/min] n1=1400 1/min	T2max [Nm]	P1max [kW]
---	--------------------------------	---------------	---------------

G43G23

12756	0.11	875	<0.05
10898	0.13	875	<0.05
9431.2	0.15	875	<0.05
8243.8	0.17	875	<0.05
7262.8	0.19	875	<0.05
6438.8	0.22	875	<0.05
5777.7	0.24	875	<0.05
5050.2	0.28	875	<0.05
4449.3	0.31	875	<0.05
3944.5	0.35	875	<0.05
3453.5	0.41	875	<0.05
3042.5	0.46	875	<0.05
2697.3	0.52	875	<0.05

G43G22

2429.7	0.58	875	0.05
2085.9	0.67	875	0.06
1814.5	0.77	875	0.07
1594.8	0.88	875	0.08
1413.3	0.99	875	0.09
1260.8	1.1	875	0.10
1131.0	1.2	875	0.11
1027.9	1.4	875	0.12
906.23	1.5	875	0.14
802.62	1.7	875	0.16
719.94	1.9	875	0.18
653.17	2.1	875	0.20
585.39	2.4	875	0.22
525.09	2.7	875	0.24
477.22	2.9	875	0.27
420.75	3.3	875	0.30
372.64	3.8	875	0.34
334.26	4.2	875	0.38
303.26	4.6	875	0.42
268.73	5.2	875	0.48
240.42	5.8	875	0.53

G43

210.05	6.7	875	0.61
181.51	7.7	875	0.71
158.99	8.8	875	0.81
140.75	9.9	875	0.91
125.69	11	875	1.02
113.03	12	875	1.13
102.26	14	875	1.25
93.21	15	875	1.38
83.15	17	875	1.54
74.59	19	875	1.72
67.67	21	875	1.90
59.97	23	875	2.14
56.95	25	875	2.25
51.52	27	875	2.49
46.96	30	875	2.73
41.89	33	875	3.06
37.58	37	875	3.41
34.09	41	875	3.76
30.21	46	875	4.25
26.59	53	860	4.74
23.29	60	800	5.0
20.45	68	735	5.3

i	n2 [1/min] n1=1400 1/min	T2max [Nm]	P1max [kW]
---	--------------------------------	---------------	---------------

G42

26.83	52	875	4.78
24.23	58	865	5.2
22.01	64	850	5.7
20.12	70	860	6.3
18.06	78	875	7.1
16.30	86	845	7.6
15.00	93	815	8.0
13.41	104	805	8.8
11.90	118	760	9.4
10.55	133	725	10.1
9.39	149	680	10.6
8.04	174	635	11.0
7.09	197	600	11.0
6.82	205	470	10.1
6.05	231	455	11.0
5.36	261	440	11.0
4.77	293	425	11.0
4.09	342	405	11.0
3.61	388	385	11.0

G53G23

13862	0.10	1630	<0.05
11843	0.12	1630	<0.05
10249	0.14	1630	<0.05
8958.3	0.16	1630	<0.05
7892.3	0.18	1630	<0.05
6996.9	0.20	1630	<0.05
6278.4	0.22	1630	<0.05
5487.9	0.26	1630	<0.05
4834.9	0.29	1630	<0.05
4286.4	0.33	1630	0.06
3752.8	0.37	1630	0.06
3306.2	0.42	1630	0.07
2931.1	0.48	1630	0.08

G53G22

2640.3	0.53	1630	0.09
2266.7	0.62	1630	0.11
1971.8	0.71	1630	0.12
1733.0	0.81	1630	0.14
1535.8	0.91	1630	0.16
1370.1	1.0	1630	0.17
1229.0	1.1	1630	0.19
1116.9	1.3	1630	0.21
984.77	1.4	1630	0.24
872.18	1.6	1630	0.27
802.80	1.7	1630	0.30
717.52	2.0	1630	0.33
636.13	2.2	1630	0.38
570.60	2.5	1630	0.42
518.58	2.7	1630	0.46
457.21	3.1	1630	0.52
404.94	3.5	1630	0.59
372.73	3.8	1630	0.64
333.14	4.2	1630	0.72
295.82	4.7	1630	0.81
262.14	5.3	1630	0.91
229.46	6.1	1630	1.04
207.08	6.8	1630	1.15
190.61	7.3	1630	1.25

i	n2 [1/min] n1=1400 1/min	T2max [Nm]	P1max [kW]
---	--------------------------------	---------------	---------------

G53

186.77	7.5	1630	1.28
165.96	8.4	1630	1.44
148.78	9.4	1630	1.60
134.34	10	1630	1.78
122.04	11	1630	1.96
111.58	13	1630	2.14
100.12	14	1630	2.38
90.36	15	1630	2.64
83.17	17	1630	2.87
74.34	19	1630	3.21
66.01	21	1630	3.62
58.49	24	1630	4.08
51.20	27	1630	4.66
46.21	30	1630	5.2
42.53	33	1630	5.6
38.01	37	1630	6.3
33.76	41	1630	7.1
29.91	47	1560	7.6
26.62	53	1500	8.3
22.80	61	1430	9.2
20.11	70	1350	9.8

G52

31.19	45	1130	5.3
28.45	49	1120	5.8
26.17	53	1330	7.4
23.62	59	1310	8.1
21.45	65	1290	8.8
19.83	71	1390	10.3
17.86	78	1430	11.7
16.01	87	1360	12.5
14.33	98	1330	13.6
12.90	109	1260	14.3
11.25	124	1190	15.5
10.08	139	1140	16.6
8.94	157	1070	17.5
7.86	178	1000	18.5
7.02	199	815	17.0
6.32	221	790	18.3
5.51	254	760	18.5
4.94	283	735	18.5
4.38	319	700	18.5
3.85	364	660	18.5

G63G33

14755	0.095	2800	<0.05
12667	0.11	2800	<0.05
11019	0.13	2800	<0.05
9684.6	0.14	2800	<0.05
8582.4	0.16	2800	<0.05
7656.6	0.18	2800	0.05
6867.9	0.20	2800	0.06
6241.8	0.22	2800	0.07
5503.1	0.25	2800	0.07
4874.0	0.29	2800	0.08
4386.6	0.32	2800	0.09
3827.0	0.37	2800	0.11
3402.1	0.41	2800	0.12
3051.7	0.46	2800	0.13
2773.5	0.50	2800	0.15
2445.3	0.57	2800	0.17

i	n2 [1/min] n1=1400 1/min	T2max [Nm]	P1max [kW]
---	--------------------------------	---------------	---------------

G63G32

2136.3	0.66	2800	0.19
1907.7	0.73	2800	0.22
1715.6	0.82	2800	0.24
1552.0	0.90	2800	0.26
1414.7	0.99	2800	0.29
1262.1	1.1	2800	0.33
1132.1	1.2	2800	0.36
1018.9	1.4	2800	0.40
888.88	1.6	2800	0.46
796.35	1.8	2800	0.52
686.91	2.0	2800	0.60
612.80	2.3	2800	0.67
549.68	2.5	2800	0.75
494.71	2.8	2800	0.83
431.60	3.2	2800	0.95
386.67	3.6	2800	1.06
343.00	4.1	2800	1.20
301.31	4.6	2800	1.36
271.16	5.2	2800	1.51
237.47	5.9	2800	1.73

G63

221.95	6.3	2800	1.85
199.76	7.0	2800	2.05
181.12	7.7	2800	2.27
165.23	8.5	2800	2.48
151.99	9.2	2800	2.70
137.17	10	2800	2.99
124.54	11	2800	3.30
115.14	12	2800	3.57
103.72	13	2800	3.96
92.94	15	2800	4.42
83.23	17	2800	4.93
74.91	19	2800	5.5
65.35	21	2800	6.3
58.55	24	2800	7.0
51.94	27	2690	7.6
45.13	31	2520	8.2
40.41	35	2450	8.9
36.37	38	2350	9.5
31.73	44	2240	10.3
28.43	49	2160	11.1
25.22	56	2080	12.1
22.15	63	1990	13.2

G62

31.16	45	2040	9.6
28.42	49	2020	10.4
26.36	53	2120	11.8
23.88	59	2200	13.5
21.72	64	2110	14.2
19.60	71	2100	15.7
17.78	79	2010	16.6
15.40	91	1930	18.4
13.94	100	1860	19.6
12.65	111	1780	20.6
11.28	124	1690	22.0
9.57	146	1570	22.0
8.16	171	1460	22.0
7.47	187	1220	22.0
6.76	207	1180	22.0
6.13	228	1150	22.0
5.47	256	1110	22.0
4.64	302	1050	22.0
3.96	354	1000	22.0

i	n2 [1/min] n1=1400 1/min	T2max [Nm]	P1max [kW]
---	--------------------------------	---------------	---------------

G73G33

19566	0.072	4880	<0.05
16797	0.083	4880	<0.05
14612	0.096	4880	<0.05
12842	0.11	4880	0.06
11381	0.12	4880	0.06
10153	0.14	4880	0.07
9107.3	0.15	4880	0.08
8277.0	0.17	4880	0.09
7297.6	0.19	4880	0.10
6463.2	0.22	4880	0.11
5863.6	0.24	4880	0.12
5079.2	0.28	4880	0.14
4511.4	0.31	4880	0.16
4046.7	0.35	4880	0.18
3677.8	0.38	4880	0.19
3242.6	0.43	4880	0.22

G73G32

2832.9	0.49	4880	0.25
2529.7	0.55	4880	0.28
2275.0	0.62	4880	0.31
2058.1	0.68	4880	0.35
1876.0	0.75	4880	0.38
1673.6	0.84	4880	0.43
1501.2	0.93	4880	0.48
1361.9	1.0	4880	0.53
1179.7	1.2	4880	0.61
1067.4	1.3	4880	0.67
969.05	1.4	4880	0.74
864.03	1.6	4880	0.83
805.28	1.7	4880	0.89
722.33	1.9	4880	0.99
655.31	2.1	4880	1.09
567.65	2.5	4880	1.26
513.62	2.7	4880	1.39
466.28	3.0	4880	1.54
415.75	3.4	4880	1.72
351.79	4.0	4880	2.04
318.30	4.4	4880	2.25
288.96	4.8	4880	2.48
257.65	5.4	4880	2.78

G73

250.97	5.6	4880	2.85
228.26	6.1	4880	3.14
208.90	6.7	4880	3.43
193.61	7.2	4880	3.70
175.48	8.0	4880	4.08
160.04	8.7	4880	4.47
148.43	9.4	4880	4.82
134.48	10	4880	5.3
122.32	11	4880	5.9
110.37	13	4880	6.5
100.13	14	4880	7.2
86.74	16	4880	8.3
78.48	18	4880	9.1
71.25	20	4880	10.1
63.53	22	4880	11.3
53.88	26	4880	13.3
47.41	30	4880	15.1
41.07	34	4800	17.1
37.16	38	4640	18.3
33.74	41	4510	19.6
30.08	47	4360	21.2
25.51	55	4150	23.8
21.77	64	3960	26.7

i	n2 [1/min] n1=1400 1/min	T2max [Nm]	P1max [kW]
---	--------------------------------	---------------	---------------

G72

26.11	54	4130	23.2
23.65	59	4160	25.8
21.55	65	3970	27.0
18.87	74	3910	30.0
17.17	82	3730	30.0
15.46	91	3540	30.0
13.88	101	3360	30.0
11.91	118	3130	30.0
10.29	136	2930	30.0
9.15	153	2450	30.0
8.95	156	2740	30.0
8.32	168	2350	30.0
7.50	187	2240	30.0
6.73	208	2140	30.0
5.77	242	2000	30.0
4.99	280	1880	30.0
4.34	323	1760	30.0

G83G43

19895	0.070	8900	0.07
17193	0.081	8900	0.08
15059	0.093	8900	0.09
13332	0.11	8900	0.10
11905	0.12	8900	0.11
10707	0.13	8900	0.12
9685.6	0.14	8900	0.13
8828.6	0.16	8900	0.15
7876.1	0.18	8900	0.17
7064.8	0.20	8900	0.18
6426.4	0.22	8900	0.20
5788.3	0.24	8900	0.23
5393.9	0.26	8900	0.24
4879.5	0.29	8900	0.27
4447.7	0.31	8900	0.29
3967.9	0.35	8900	0.33
3559.2	0.39	8900	0.37
3237.5	0.43	8900	0.40
2916.1	0.48	8900	0.45

G83G42

2541.6	0.55	8900	0.51
2294.9	0.61	8900	0.57
2084.8	0.67	8900	0.63
1906.2	0.73	8900	0.68
1710.4	0.82	8900	0.76
1543.6	0.91	8900	0.85
1404.1	1.00	8900	0.93
1264.7	1.1	8900	1.03
1135.5	1.2	8900	1.15
974.05	1.4	8900	1.34
841.95	1.7	8900	1.55
731.87	1.9	8900	1.78
645.52	2.2	8900	2.02
573.21	2.4	8900	2.28
507.95	2.8	8900	2.57
462.05	3.0	8900	2.82
416.17	3.4	8900	3.13
373.66	3.7	8900	3.49
320.53	4.4	8900	4.07
285.24	4.9	8900	4.57
244.36	5.7	8900	5.3
215.53	6.5	8900	6.1

i	n2 [1/min] n1=1400 1/min	T2max [Nm]	P1max [kW]
---	--------------------------------	---------------	---------------

G83

186.96	7.5	8900	7.0
170.93	8.2	8900	7.6
158.00	8.9	8900	8.3
143.59	9.8	8900	9.1
131.06	11	8900	10.0
118.71	12	8900	11.0
108.13	13	8900	12.1
94.72	15	8900	13.8
86.16	16	8900	15.1
77.61	18	8900	16.8
69.68	20	8900	18.7
59.77	23	8900	21.8
51.67	27	8900	25.2
44.91	31	8900	29.0
38.61	36	8590	32.6
34.66	40	8310	35.1
29.74	47	7940	39.1
25.70	54	7600	43.3
22.34	63	7290	45.0

G82

18.81	74	6040	45.0
17.01	82	5920	45.0
14.76	95	5640	45.0
12.91	108	5440	45.0
11.37	123	5250	45.0
9.79	143	4560	45.0
8.85	158	4360	45.0
7.68	182	4100	45.0
6.72	208	3870	45.0
5.92	236	3650	45.0
5.06	277	3850	45.0
4.40	318	3690	45.0

G93G43

22255	0.063	13600	0.09
19232	0.073	13600	0.10
16845	0.083	13600	0.12
14913	0.094	13600	0.13
13317	0.11	13600	0.15
11976	0.12	13600	0.17
10834	0.13	13600	0.18
9875.6	0.14	13600	0.20
8810.2	0.16	13600	0.23
7902.7	0.18	13600	0.25
7223.9	0.19	13600	0.28
6595.1	0.21	13600	0.30
6033.5	0.23	13600	0.33
5458.2	0.26	13600	0.37
4975.2	0.28	13600	0.40
4438.5	0.32	13600	0.45
3981.3	0.35	13600	0.50
3639.3	0.38	13600	0.55
3322.5	0.42	13600	0.60
3004.0	0.47	13600	0.66

i	n2 [1/min] n1=1400 1/min	T2max [Nm]	P1max [kW]
---	--------------------------------	---------------	---------------

G93G42

2843.0	0.49	13600	0.70
2567.1	0.55	13600	0.78
2332.1	0.60	13600	0.86
2132.2	0.66	13600	0.94
1913.2	0.73	13600	1.04
1726.6	0.81	13600	1.16
1578.3	0.89	13600	1.26
1441.0	0.97	13600	1.38
1302.8	1.1	13600	1.53
1130.2	1.2	13600	1.77
988.90	1.4	13600	2.02
871.17	1.6	10800	1.82
803.56	1.7	13600	2.48
722.07	1.9	13600	2.76
641.18	2.2	13600	3.11
568.19	2.5	13600	3.51
519.38	2.7	13600	3.84
474.18	3.0	13600	4.21
428.72	3.3	13600	4.65
371.90	3.8	13600	5.4
325.42	4.3	13600	6.1
288.28	4.9	13600	6.9
250.07	5.6	13600	8.0
218.81	6.4	13600	9.1
192.77	7.3	13600	10.4
177.81	7.9	10000	8.2

G93

157.04	8.9	13600	12.7
144.12	9.7	13600	13.8
131.03	11	13600	15.2
119.82	12	13600	16.7
105.95	13	13600	18.8
96.85	14	13600	20.6
88.42	16	13600	22.6
79.95	18	13600	25.0
69.35	20	13600	28.8
60.68	23	13600	32.9
53.46	26	13600	37.3
49.31	28	13600	40.5
45.02	31	13600	44.3
40.70	34	13600	49.0
35.31	40	13600	56.5
30.89	45	13500	64.1
27.22	51	13000	70.0
23.27	60	12300	77.5
20.23	69	11700	84.8

G92

17.34	81	11600	90.0
15.26	92	11100	90.0
13.53	104	10600	90.0
11.74	119	10200	90.0
10.30	136	9760	90.0
9.15	153	6610	90.0
8.05	174	6350	90.0
7.14	196	6120	90.0
6.19	226	5850	90.0
5.43	258	5620	90.0

Selectietabel - Motorreductoren

Type	n2 [1/min]	T2 [Nm]	cG	i	~kg
0.12 kW					
G33G12A DM63K4					25
3.0	360	1.35	454.59		
3.5	315	1.50	396.78		
4.0	275	1.75	347.53		
4.5	245	1.95	310.04		
G22G12A DM63K4					18
3.8	295	0.80	361.24		
4.4	255	0.90	312.61		
5.1	220	1.05	273.25		
5.7	196	1.20	240.74		
6.5	174	1.35	213.43		
7.3	155	1.50	190.16		
8.1	139	1.70	170.71		
G23A DM63K4					13
9.0	127	1.85	153.41		
G13G02A DM63K4					13
8.1	135	0.85	169.38		
9.5	116	1.00	145.94		
11	102	1.15	127.83		
G13A DM63K4					10
12	96	1.20	115.34		
14	81	1.45	97.78		
16	70	1.70	83.91		
19	60	1.95	72.69		
G03A DM63K4					8
19	60	1.00	72.52		
23	51	1.20	61.26		
26	43	1.40	52.38		
31	38	1.60	45.19		
35	33	1.85	39.24		
40	28	2.1	34.25		
47	25	2.4	29.57		
54	21	2.8	25.51		
62	18	3.3	22.15		
71	16	3.7	19.33		
G02A DM63K4					8
81	14	4.3	16.97		
96	12	5.0	14.34		
113	10	5.9	12.26		
130	8.8	6.8	10.58		
150	7.6	7.9	9.18		
172	6.7	9.0	8.02		
197	5.8	10	7.02		
229	5.0	12	6.04		
265	4.3	13	5.21		
305	3.8	14	4.52		
350	3.3	15	3.95		
399	2.9	16	3.46		
0.18 kW					
G43G22A DM63G4					39
2.9	570	1.55	477.22		
3.3	505	1.75	420.75		
3.7	445	1.95	372.64		
G33G12A DM63G4					25
3.0	545	0.90	454.59		
3.5	475	1.00	396.78		
4.0	415	1.15	347.53		
4.5	370	1.30	310.04		
5.0	335	1.45	278.10		
5.5	300	1.60	252.75		
6.2	265	1.80	222.84		
G22G12A DM63G4					19
5.7	295	0.80	240.74		
6.5	260	0.90	213.43		
7.3	230	1.00	190.16		
8.1	210	1.10	170.71		
Type	n2 [1/min]	T2 [Nm]	cG	i	~kg
0.25 kW					
G23A DM63G4					14
9.0	191	1.20	153.41		
11	163	1.45	131.06		
12	141	1.65	113.42		
14	123	1.90	99.14		
G13A DM63G4					10
12	144	0.80	115.34		
14	122	0.95	97.78		
16	105	1.10	83.91		
19	91	1.30	72.69		
22	79	1.50	63.42		
25	69	1.70	55.63		
28	61	1.90	49.00		
G03A DM63G4					8
23	76	0.80	61.26		
26	65	0.90	52.38		
31	56	1.05	45.19		
35	49	1.25	39.24		
40	43	1.40	34.25		
47	37	1.65	29.57		
54	32	1.90	25.51		
62	28	2.2	22.15		
71	24	2.5	19.33		
G02A DM63G4					8
81	21	2.8	16.97		
96	18	3.4	14.34		
113	15	3.9	12.26		
130	13	4.6	10.58		
150	11	5.2	9.18		
172	10.0	6.0	8.02		
197	8.7	6.9	7.02		
229	7.5	7.8	6.04		
265	6.5	8.6	5.21		
305	5.6	9.4	4.52		
350	4.9	10.0	3.95		
399	4.3	11	3.46		
0.37 kW					
G53G22A DM71G4					62
3.1	1100	1.50	457.21		
3.5	975	1.65	404.94		
3.8	895	1.80	372.73		
4.2	800	2.0	333.14		
G43G22A DM71G4					41
3.4	1010	0.85	420.75		
3.8	895	1.00	372.64		
4.2	805	1.10	334.26		
4.6	730	1.20	303.26		
5.2	645	1.35	268.73		
5.9	580	1.50	240.42		
G43A DM71G4					32
6.7	525	1.65	210.05		
7.8	455	1.90	181.51		
G33G12A DM71G4					27
5.6	610	0.80	252.75		
6.3	535	0.90	222.84		
7.1	475	1.00	197.36		
G33A DM71G4					21
8.0	445	1.10	177.27		
9.3	380	1.25	152.19		
11	330	1.45	132.39		
12	290	1.65	116.36		
14	260	1.85	103.11		
G23A DM71G4					15
12	285	0.80	113.42		
14	250	0.95	99.14		
16	220	1.05	87.34		
18	194	1.20	77.43		
20	174	1.35	69.48		
23	152	1.55	60.74		
26	134	1.75	53.51		
30	119	1.95	47.44		
Type	n2 [1/min]	T2 [Nm]	cG	i	~kg
0.55 kW					
G63G32A DM80K4					100
2.8	1780	1.60	494.71		
3.3	1550	1.80	431.60		
3.6	1390	2.0	386.67		
G53G22A DM80K4					63
3.1	1640	1.00	457.21		
3.5	1450	1.10	404.94		
3.8	1340	1.20	372.73		
4.2	1200	1.35	333.14		
4.7	1060	1.55	295.82		
5.4	940	1.75	262.14		
6.1	825	2.00	229.46		
G43G22A DM80K4					43
4.6	1090	0.80	303.26		
5.2	965	0.90	268.73		
5.8	865	1.00	240.42		
G43A DM80K4					34
8.8	595	1.45	158.99		
10.0	525	1.65	140.75		
11	470	1.85	125.69		
G33A DM80K4					23
11	495	0.95	132.39		
12	435	1.10	116.36		
14	385	1.25	103.11		
15	345	1.40	91.99		
17	310	1.55	82.51		
19	280	1.70	74.99		
21	245	1.95	66.12		
G23A DM80K4					17
20	260	0.90	69.48		
23	225	1.05	60.74		
26	200	1.15	53.51		
30	177	1.30	47.44		
34	155	1.50	41.53		
38	137	1.70	36.59		
43	121	1.90	32.44		

Type	n2 [1/min]	T2 [Nm]	cG	i	~kg
G13A DM80K4					14
38	138	0.85	36.98		
44	120	1.00	32.03		
50	104	1.10	27.95		
57	92	1.30	24.52		
65	81	1.45	21.59		
G12A DM80K4					14
76	69	1.70	18.39		
87	60	1.95	16.08		
G03A DM80K4					12
73	72	0.85	19.33		
G02A DM80K4					12
115	46	1.30	12.26		
133	40	1.50	10.58		
153	34	1.75	9.18		
175	30	2.0	8.02		
200	26	2.3	7.02		
233	23	2.6	6.04		
270	19	2.9	5.21		
311	17	3.1	4.52		
356	15	3.3	3.95		
406	13	3.6	3.46		

0.75 kW

G63G32A DM80GC4					101
2.9	2410	1.15	494.71		
3.3	2100	1.35	431.60		
3.6	1890	1.50	386.67		
4.1	1670	1.65	343.00		
4.7	1470	1.90	301.31		
G53G22A DM80GC4					65
3.5	1970	0.80	404.94		
3.8	1820	0.90	372.73		
4.2	1620	1.00	333.14		
4.8	1440	1.15	295.82		
5.4	1280	1.25	262.14		
6.1	1120	1.45	229.46		
6.8	1010	1.60	207.08		
7.4	930	1.75	190.61		
G53A DM80GC4					57
7.5	950	1.70	186.77		
8.5	845	1.95	165.96		
G43A DM80GC4					35
8.9	810	1.10	158.99		
10	715	1.20	140.75		
11	640	1.35	125.69		
12	575	1.50	113.03		
14	520	1.70	102.26		
15	475	1.85	93.21		
G33A DM80GC4					25
12	590	0.80	116.36		
14	525	0.90	103.11		
15	465	1.05	91.99		
17	420	1.15	82.51		
19	380	1.25	74.99		
21	335	1.45	66.12		
24	295	1.60	58.56		
27	265	1.85	51.70		
G23A DM80GC4					19
26	270	0.85	53.51		
30	240	0.95	47.44		
34	210	1.10	41.53		
39	186	1.25	36.59		
43	165	1.40	32.44		
49	147	1.60	28.90		
54	132	1.75	25.95		
62	115	2.00	22.65		
G13A DM80GC4					15
50	142	0.80	27.95		
58	125	0.95	24.52		
65	110	1.05	21.59		

Type	n2 [1/min]	T2 [Nm]	cG	i	~kg
G12A DM80GC4					15
77	93	1.25	18.39		
88	82	1.45	16.08		
100	72	1.65	14.16		
112	64	1.85	12.56		
G02A DM80GC4					13
115	62	0.95	12.26		
133	54	1.10	10.58		
154	47	1.30	9.18		
176	41	1.45	8.02		
201	36	1.70	7.02		
234	31	1.90	6.04		
271	26	2.1	5.21		
312	23	2.3	4.52		
357	20	2.4	3.95		
408	18	2.7	3.46		

1.1 kW

G73G32A DM90SC4					154
3.0	3320	1.45	466.28		
3.4	2960	1.65	415.75		
4.0	2510	1.95	351.79		
4.4	2270	2.2	318.30		
4.9	2060	2.4	288.96		
G63G32A DM90SC4					104
2.9	3530	0.80	494.71		
3.3	3080	0.90	431.60		
3.7	2760	1.00	386.67		
4.1	2440	1.15	343.00		
4.7	2150	1.30	301.31		
5.2	1930	1.45	271.16		
6.0	1690	1.65	237.47		
G63A DM90SC4					90
6.4	1650	1.70	221.95		
7.1	1480	1.90	199.76		
7.8	1340	2.1	181.12		
8.6	1230	2.3	165.23		
9.3	1130	2.5	151.99		
G53G22A DM90SC4					68
5.4	1870	0.85	262.14		
6.2	1640	1.00	229.46		
6.8	1480	1.10	207.08		
7.4	1360	1.20	190.61		
G53A DM90SC4					60
8.5	1230	1.30	165.96		
9.5	1100	1.45	148.78		
11	995	1.65	134.34		
12	905	1.80	122.04		
13	830	1.95	111.58		
14	745	2.2	100.12		
16	670	2.4	90.36		
G43A DM90SC4					38
10	1040	0.85	140.75		
11	935	0.95	125.69		
13	840	1.05	113.03		
14	760	1.15	102.26		
15	690	1.25	93.21		
17	615	1.40	83.15		
19	555	1.60	74.59		
21	500	1.75	67.67		
24	445	1.95	59.97		
25	425	2.1	56.95		
27	380	2.3	51.52		
30	350	2.5	46.96		

Type	n2 [1/min]	T2 [Nm]	cG	i	~kg
G33A DM90SC4					28
17	615	0.80	82.51		
19	555	0.85	74.99		
21	490	1.00	66.12		
24	435	1.10	58.56		
27	385	1.25	51.70		
31	340	1.40	45.82		
35	305	1.60	40.87		
39	270	1.75	36.66		
42	245	1.85	33.32		
48	220	2.0	29.38		
54	193	2.2	26.02		
61	173	2.3	23.28		
G32A DM90SC4					27
55	191	2.5	25.67		
G23A DM90SC4					21
39	270	0.85	36.59		
44	240	0.95	32.44		
49	215	1.10	28.90		
55	193	1.20	25.95		
62	168	1.35	22.65		
71	147	1.60	19.83		
G22A DM90SC4					21
74	142	1.65	19.18		
83	126	1.85	17.00		
93	113	2.1	15.16		
104	101	2.3	13.60		
114	92	2.5	12.36		
G12A DM90SC4					18
88	119	1.00	16.08		
100	105	1.10	14.16		
113	93	1.25	12.56		
126	83	1.40	11.19		
141	75	1.50	10.04		
161	65	1.65	8.77		
184	57	1.75	7.68		
201	52	1.85	7.06		
228	46	2.00	6.22		
257	41	2.1	5.51		
288	36	2.3	4.91		
321	33	2.4	4.41		
368	29	2.6	3.85		
420	25	2.8	3.37		

1.5 kW

G83G42A DM90LC4					238
3.1	4510	1.95	462.05		
3.4	4060	2.2	416.17		
3.8	3640	2.4	373.66		
G73G32A DM90LC4					156
3.0	4550	1.05	466.28		
3.4	4050	1.20	415.75		
4.0	3430	1.40	351.79		
4.4	3100	1.55	318.30		
4.9	2820	1.75	288.96		
5.5	2510	1.95	257.65		
G63G32A DM90LC4					106
4.1	3350	0.85	343.00		
4.7	2940	0.95	301.31		
5.2	2640	1.05	271.16		
5.9	2320	1.20	237.47		
G63A DM90LC4					93
6.4	2250	1.25	221.95		
7.1	2030	1.40	199.76		
7.8	1840	1.50	181.12		
8.5	1680	1.65	165.23		
9.3	1540	1.80	151.99		
10	1390	2.0	137.17		
11	1270	2.2	124.54		
12	1170	2.4	115.14		
G53G22A DM90LC4					70
6.8	2020	0.80	207.08		
7.4	1860	0.90	190.61		

Type	n2 [1/min]	T2 [Nm]	cG	i	~kg
G53A DM90LC4					63
8.5	1690	0.95	165.96		
9.5	1510	1.10	148.78		
10	1360	1.20	134.34		
12	1240	1.30	122.04		
13	1130	1.45	111.58		
14	1020	1.60	100.12	</	

Type	n2 [1/min]	T2 [Nm]	cG	i	~kg
G83G42A DM100LC4					245
3.1	6610	1.35	462.05		
3.4	5950	1.50	416.17		
3.8	5350	1.65	373.66		
4.4	4590	1.95	320.53		
4.9	4080	2.2	285.24		
G73G32A DM100LC4					163
3.4	5950	0.80	415.75		
4.0	5030	0.95	351.79		
4.4	4550	1.05	318.30		
4.9	4130	1.20	288.96		
5.5	3690	1.35	257.65		
G73A DM100LC4					149
5.6	3740	1.30	250.97		
6.2	3400	1.45	228.26		
6.7	3110	1.55	208.90		
7.3	2880	1.70	193.61		
8.0	2610	1.85	175.48		
8.8	2380	2.0	160.04		
9.5	2210	2.2	148.43		
10	2000	2.4	134.48		
G63G32A DM100LC4					113
5.9	3400	0.80	237.47		
G63A DM100LC4					99
7.1	2980	0.95	199.76		
7.8	2700	1.05	181.12		
8.5	2460	1.15	165.23		
9.3	2260	1.25	151.99		
10	2040	1.35	137.17		
11	1860	1.50	124.54		
12	1720	1.65	115.14		
14	1550	1.80	103.72		
15	1380	2.0	92.94		
17	1240	2.3	83.23		
19	1120	2.5	74.91		
G53A DM100LC4					69
10	2000	0.80	134.34		
12	1820	0.90	122.04		
13	1660	1.00	111.58		
14	1490	1.10	100.12		
16	1350	1.20	90.36		
17	1240	1.30	83.17		
19	1110	1.45	74.34		
21	985	1.65	66.01		
24	870	1.85	58.49		
28	765	2.1	51.20		
31	690	2.4	46.21		
G52A DM100LC4					67
45	465	2.4	31.19		
G43A DM100LC4					48
19	1110	0.80	74.59		
21	1010	0.85	67.67		
24	895	1.00	59.97		
25	850	1.05	56.95		
27	770	1.15	51.52		
30	700	1.25	46.96		
34	625	1.40	41.89		
38	560	1.55	37.58		
41	510	1.70	34.09		
47	450	1.95	30.21		
53	395	2.2	26.59		
61	345	2.3	23.29		
69	305	2.4	20.45		
G42A DM100LC4					48
53	400	2.2	26.83		
58	360	2.4	24.23		

Type	n2 [1/min]	T2 [Nm]	cG	i	~kg
G33A DM100LC4					37
34	610	0.80	40.87		
38	545	0.85	36.66		
42	495	0.95	33.32		
48	440	1.00	29.38		
54	390	1.10	26.02		
61	345	1.15	23.28		
70	300	1.25	20.27		
G32A DM100LC4					37
62	340	1.40	22.92		
68	305	1.55	20.61		
76	280	1.75	18.65		
83	255	1.90	17.00		
93	225	2.1	15.16		
104	205	2.4	13.60		
142	148	1.90	9.92		
G22A DM100LC4					31
83	255	0.90	17.00		
93	225	1.05	15.16		
104	205	1.15	13.60		
114	184	1.25	12.36		
129	162	1.45	10.90		
146	144	1.60	9.65		
163	129	1.70	8.64		
188	112	1.85	7.52		
200	105	1.60	7.04		
223	94	1.75	6.31		
246	86	2.3	5.74		
279	75	2.4	5.06		
315	67	2.5	4.48		
352	60	2.6	4.01		
404	52	2.7	3.49		

3.0 kW

G93G42A DM100LD4					356
3.0	9250	1.45	474.18		
3.3	8360	1.65	428.72		
3.8	7250	1.90	371.90		
4.3	6350	2.1	325.42		
G83G42A DM100LD4					248
3.1	9010	1.00	462.05		
3.4	8120	1.10	416.17		
3.8	7290	1.20	373.66		
4.4	6250	1.40	320.53		
4.9	5560	1.60	285.24		
G73G32A DM100LD4					167
4.4	6210	0.80	318.30		
4.9	5640	0.85	288.96		
5.5	5030	0.95	257.65		
G73A DM100LD4					153
5.6	5100	0.95	250.97		
6.2	4640	1.05	228.26		
6.7	4240	1.15	208.90		
7.3	3930	1.25	193.61		
8.0	3570	1.35	175.48		
8.8	3250	1.50	160.04		
9.5	3020	1.60	148.43		
10	2730	1.80	134.48		
12	2490	1.95	122.32		
13	2240	2.2	110.37		
14	2030	2.4	100.13		
G63A DM100LD4					102
8.5	3360	0.85	165.23		
9.3	3090	0.90	151.99		
10	2790	1.00	137.17		
11	2530	1.10	124.54		
12	2340	1.20	115.14		
14	2110	1.35	103.72		
15	1890	1.50	92.94		
17	1690	1.65	83.23		
19	1520	1.85	74.91		

Type	n2 [1/min]	T2 [Nm]	cG	i	~kg
G53A DM100LD4					72
14	2030	0.80	100.12		
16	1840	0.90	90.36		
17	1690	0.95	83.17		
19	1510	1.10	74.34		
21	1340	1.20	66.01		
24	1190	1.35	58.49		
28	1040	1.55	51.20		
31	940	1.75	46.21		
33	865	1.90	42.53		
37	770	2.1	38.01		
42	685	2.4	33.76		
G52A DM100LD4					71
45	635	1.80	31.19		
50	580	1.95	28.45		
54	530	2.5	26.17		
G43A DM100LD4					52
27	1050	0.85	51.52		
30	955	0.90	46.96		
34	850	1.05	41.89		
38	765	1.15	37.58		
41	695	1.25	34.09		
47	615	1.45	30.21		
53	540	1.60	26.59		
61	475	1.70	23.29		
69	415	1.75	20.45		
G42A DM100LD4					51
53	545	1.60	26.83		
58	490	1.75	24.23		
64	445	1.90	22.01		
70	410	2.1	20.12		
78	365	2.4	18.06		
G33A DM100LD4					41
54	530	0.80	26.02		
61	475	0.85	23.28		
70	410	0.95	20.27		
G32A DM100LD4					41
62	465	1.05	22.92		
68	420	1.15	20.61		
76	380	1.25	18.65		
83	345	1.40	17.00		
93	310	1.55	15.16		
104	275	1.75	13.60		
114	250	1.90	12.34		
129	220	2.1	10.93		
142	200	1.40	9.92		
146	196	2.2	9.63		
167	171	2.4	8.43		
193	148	2.2	7.30		
215	133	2.4	6.54		
G22A DM100LD4					34
104	275	0.85	13.60		
114	250	0.95	12.36		
129	220	1.05	10.90		
146	196	1.15	9.65		
163	176	1.25	8.64		
188	153	1.35	7.52		
200	143	1.15	7.04		
223	128	1.30	6.31		
246	117	1.70	5.74		
279	103	1.80	5.06		
315	91	1.85	4.48		
352	81	1.95	4.01		
404	71	2.0	3.49		

4.0 kW

G93G42A DM112MX4					365
3.0	12200	1.10	474.18		
3.3	11000	1.25	428.72		
3.8	9570	1.40	371.90		
4.4	8370	1.65	325.42		

Type	n2 [1/min]	T2 [Nm]	cG	i	~kg
G83G42A DM112MX4					256
3.4	10700	0.85	416.17		
3.8	9620	0.95	373.66		
4.4	8250	1.10	320.53		
5.0	7340	1.20	285.24		
G73A DM112MX					

Type	n2 [1/min]	T2 [Nm]	cG	i	~kg	Type	n2 [1/min]	T2 [Nm]	cG	i	~kg	Type	n2 [1/min]	T2 [Nm]	cG	i	~kg	Type	n2 [1/min]	T2 [Nm]	cG	i	~kg
G32A DM112MX4						G62A DA132S4						G83A DA132MX4						G42A DA132MX4					
69	555	0.85	20.61		49	47	1120	1.80	31.16		128	7.8	9200	0.95	186.96		266	81	890	1.00	18.06		92
76	500	0.95	18.65			51	1030	1.95	28.42			8.5	8410	1.05	170.93			89	800	1.05	16.30		
84	455	1.05	17.00			55	950	2.2	26.36			9.2	7780	1.15	158.00			97	740	1.10	15.00		
94	405	1.20	15.16			G53A DA132S4						10	7070	1.25	143.59			109	660	1.20	13.41		
105	365	1.30	13.60			28	1850	0.90	51.20		99	11	6450	1.40	131.06			122	585	1.30	11.90		
115	330	1.45	12.34			31	1670	1.00	46.21			12	5840	1.50	118.71			138	520	1.40	10.55		
130	295	1.60	10.93			34	1540	1.05	42.53			13	5320	1.65	108.13			155	460	1.45	9.39		
144	265	1.05	9.92			38	1370	1.20	38.01			15	4660	1.90	94.72			181	395	1.60	8.04		
148	260	1.70	9.63			43	1220	1.35	33.76			17	4240	2.1	86.16			205	350	1.70	7.09		
169	225	1.85	8.43			49	1080	1.45	29.91			19	3820	2.3	77.61			213	335	1.40	6.82		
192	198	1.95	7.40			55	960	1.55	26.62			G73A DA132MX4						240	300	1.55	6.05		
195	196	1.70	7.30			64	825	1.75	22.80			12	6020	0.80	122.32		194	271	265	1.65	5.36		
218	175	1.80	6.54			72	725	1.85	20.11			13	5430	0.90	110.37			305	235	1.80	4.77		
240	159	2.0	5.94			G52A DA132S4						15	4930	1.00	100.13			356	200	2.0	4.09		
271	141	2.2	5.26			62	855	1.55	23.62		98	17	4270	1.15	86.74			404	178	2.2	3.61		
308	124	2.3	4.63			68	775	1.65	21.45			19	3860	1.25	78.48			9.2 kW					
351	109	2.5	4.06			73	715	1.95	19.83			20	3510	1.40	71.25			G93G42A DA160MS4					413
400	96	2.7	3.56			81	645	2.2	17.86			23	3130	1.55	63.53			5.1	16500	0.80	288.28		
5.5 kW						91	580	2.4	16.01			27	2650	1.85	53.88			5.9	14300	0.95	250.07		
G93G42A DA132S4						G43A DA132S4						G63A DA132MX4						G93G42A DA160MS4					
3.1	16400	0.85	474.18		384	48	1090	0.80	30.21		79	22	3220	0.85	65.35		143	6.7	12600	1.10	218.81		
3.4	14900	0.90	428.72			55	960	0.90	26.59			25	2880	0.95	58.55			7.6	11100	1.25	192.77		
3.9	12900	1.05	371.90			62	840	0.95	23.29			28	2560	1.05	51.94			8.3	10200	1.00	177.81		
4.5	11300	1.20	325.42			71	740	1.00	20.45			32	2220	1.15	45.13			G93A DA160MS4					
5.0	9990	1.35	288.28			G42A DA132S4						36	1990	1.25	40.41			9.4	9390	1.45	157.04		387
5.8	8670	1.55	250.07			81	650	1.35	18.06		79	40	1790	1.30	36.37			10	8610	1.60	144.12		
6.6	7580	1.80	218.81			89	590	1.45	16.30			46	1560	1.45	31.73			11	7830	1.75	131.03		
7.5	6680	2.0	192.77			97	540	1.50	15.00			51	1400	1.55	28.43			12	7160	1.90	119.82		
8.2	6160	1.60	177.81			109	485	1.65	13.41			58	1240	1.70	25.22			14	6330	2.1	105.95		
G83G42A DA132S4						122	430	1.75	11.90			66	1090	1.80	22.15			15	5790	2.4	96.85		
4.5	11100	0.80	320.53		275	138	380	1.90	10.55			G62A DA132MX4						G83A DA160MS4					
5.1	9890	0.90	285.24			155	340	2.0	9.39			47	1530	1.35	31.16		142	10	8580	1.05	143.59		280
6.0	8470	1.05	244.36			181	290	2.2	8.04			51	1400	1.45	28.42			11	7830	1.15	131.06		
6.8	7470	1.20	215.53			205	255	2.3	7.09			55	1300	1.65	26.36			12	7100	1.25	118.71		
G83A DA132S4						213	245	1.90	6.82			61	1180	1.85	23.88			14	6460	1.40	108.13		
7.8	6750	1.30	186.96		252	240	220	2.1	6.05			67	1070	1.95	21.72			16	5660	1.55	94.72		
8.5	6170	1.45	170.93			271	194	2.3	5.36			74	965	2.2	19.60			17	5150	1.75	86.16		
9.2	5700	1.55	158.00			G32A DA132S4						82	875	2.3	17.78			19	4640	1.90	77.61		
10	5180	1.70	143.59			96	545	0.90	15.16		68	G62A DA132MX4						21	4160	2.1	69.68		
11	4730	1.90	131.06			107	490	1.00	13.60			47	1530	1.35	31.16		142	25	3570	2.5	59.77		
12	4290	2.1	118.71			118	445	1.10	12.34			51	1400	1.45	28.42			G73A DA160MS4					
13	3900	2.3	108.13			133	395	1.20	10.93			55	1300	1.65	26.36			15	5980	0.80	100.13		209
G73A DA132S4						151	345	1.25	9.63			61	1180	1.85	23.88			17	5180	0.95	86.74		
9.1	5780	0.85	160.04		181	173	305	1.35	8.43			67	1070	1.95	21.72			19	4690	1.05	78.48		
9.8	5360	0.90	148.43			197	265	1.45	7.40			74	965	2.2	19.60			21	4260	1.15	71.25		
11	4850	1.00	134.48			199	265	1.25	7.30			82	875	2.3	17.78			23	3800	1.30	63.53		
12	4420	1.10	122.32			222	235	1.35	6.54			G52A DA132MX4						27	3220	1.50	53.88		
13	3980	1.25	110.37			245	215	1.50	5.94			62	1160	1.15	23.62		113	31	2830	1.70	47.41		
15	3610	1.35	100.13			277	190	1.60	5.26			68	1060	1.20	21.45			36	2450	1.95	41.07		
17	3130	1.55	86.74			314	167	1.75	4.63			73	975	1.40	19.83			40	2220	2.1	37.16		
19	2830	1.70	78.48			359	146	1.90	4.06			81	880	1.65	17.86			44	2020	2.2	33.74		
20	2570	1.90	71.25			408	129	2.0	3.56			91	790	1.75	16.01			49	1800	2.4	30.08		
23	2290	2.1	63.53			7.5 kW						99	705	1.90	14.33			G63A DA160MS4					
27	1940	2.5	53.88			G93G42A DA132MX4						102	635	2.00	12.90		159	25	3500	0.80	58.55		
G63A DA132S4						G93G42A DA132MX4						113	635	2.00	12.90			28	3100	0.85	51.94		
16	3360	0.85	92.94		130	4.5	15400	0.90	325.42		397	129	555	2.1	11.25			33	2700	0.95	45.13		
17	3000	0.95	83.23			5.0	13600	1.00	288.28			144	495	2.3	10.08			36	2420	1.00	40.41		
19	2700	1.05	74.91			5.8	11800	1.15	250.07			163	440	2.4	8.94			40	2170	1.10	36.37		
22	2360	1.20	65.35			6.6	10300	1.30	218.81			207	345	2.4	7.02			46	1900	1.20	31.73		
25	2110	1.30	58.55			7.5	9110	1.50	192.77			230	310	2.5	6.32			52	1700	1.25	28.43		
28	1870	1.45	51.94			8.2	8400	1.20	177.81			G83G42A DA132MX4						58	1510	1.40	25.22		
32	1630	1.55	45.13			G83G42A DA132MX4						72	990	1.35	20.11			66	1320	1.50	22.15		
36	1460	1.70	40.41			6.8	10200	0.85	215.53		289	G52A DA132MX4						62	1430	1.55	23.88		157
40	1310	1.80	36.37			G62A DA132MX4						62	1160	1.15	23.62			68	1300	1.65	21.72		
46	1150	1.95	31.73			62	1160	1.15	23.62			73	975	1.40	19.83			75	1170	1.80	19.60		
51	1030	2.1	28.43			68	1060	1.20	21.45			81	880	1.65	17.86			83	1060	1.90	17.78		
58	910	2.3	25.22			73	975	1.40	19.83			91	790	1.75	16.01			95	920	2.1	15.40		
66	800	2.5	22.15			81	880	1.65	17.86			102	705	1.90	14.33			105	835	2.2	13.94		
G62A DA132MX4						G62A DA132MX4						G62A DA132MX4						G62A DA132MX4					
62																							

Type	n2 [1/min]	T2 [Nm]	cG	i	~kg
G53A DA160MS4 128					
44	2020	0.80	33.76		
49	1790	0.85	29.91		
55	1590	0.95	26.62		
64	1360	1.05	22.80		
73	1200	1.10	20.11		
G52A DA160MS4 127					
82	1070	1.35	17.86		
92	955	1.40	16.01		
103	855	1.55	14.33		
114	770	1.65	12.90		
131	675	1.75	11.25		
146	605	1.90	10.08		
164	535	2.0	8.94		
187	470	2.1	7.86		
209	420	1.95	7.02		
233	380	2.1	6.32		
267	330	2.3	5.51		
298	295	2.5	4.94		
G42A DA160MS4 108					
110	800	1.00	13.41		
123	710	1.05	11.90		
139	630	1.15	10.55		
157	560	1.20	9.39		
183	480	1.30	8.04		
207	425	1.40	7.09		
216	405	1.15	6.82		
243	360	1.25	6.05		
274	320	1.35	5.36		
308	285	1.50	4.77		
360	245	1.65	4.09		
408	215	1.80	3.61		

11.0 kW

G93G42A DA160M4 418					
5.9	17200	0.80	250.07		
6.7	15100	0.90	218.81		
7.6	13300	1.05	192.77		
8.2	12200	0.80	177.81		
G93A DA160M4 392					
9.3	11300	1.20	157.04		
10	10300	1.30	144.12		
11	9400	1.45	131.03		
12	8590	1.60	119.82		
14	7600	1.80	105.95		
15	6940	1.95	96.85		
17	6340	2.1	88.42		
18	5730	2.4	79.95		
G83A DA160M4 285					
10	10300	0.85	143.59		
11	9400	0.95	131.06		
12	8510	1.05	118.71		
14	7750	1.15	108.13		
15	6790	1.30	94.72		
17	6180	1.45	86.16		
19	5560	1.60	77.61		
21	5000	1.80	69.68		
25	4290	2.1	59.77		
28	3700	2.4	51.67		
G73A DA160M4 214					
17	6220	0.80	86.74		
19	5630	0.85	78.48		
21	5110	0.95	71.25		
23	4560	1.05	63.53		
27	3860	1.25	53.88		
31	3400	1.45	47.41		
36	2950	1.65	41.07		
39	2660	1.75	37.16		
43	2420	1.85	33.74		
49	2160	2.0	30.08		
57	1830	2.3	25.51		
67	1560	2.5	21.77		

Type	n2 [1/min]	T2 [Nm]	cG	i	~kg
G72A DA160M4 210					
56	1870	2.2	26.11		
62	1700	2.5	23.65		
G63A DA160M4 163					
32	3240	0.80	45.13		
36	2900	0.85	40.41		
40	2610	0.90	36.37		
46	2280	1.00	31.73		
52	2040	1.05	28.43		
58	1810	1.15	25.22		
66	1590	1.25	22.15		
G62A DA160M4 161					
61	1710	1.30	23.88		
67	1560	1.35	21.72		
75	1410	1.50	19.60		
82	1270	1.60	17.78		
95	1100	1.75	15.40		
105	1000	1.85	13.94		
116	905	1.95	12.65		
130	810	2.1	11.28		
153	685	2.3	9.57		
179	585	2.5	8.16		
196	535	2.3	7.47		
217	485	2.4	6.76		
G53A DA160M4 133					
55	1910	0.80	26.62		
64	1640	0.85	22.80		
73	1440	0.95	20.11		
G52A DA160M4 132					
82	1280	1.10	17.86		
92	1150	1.20	16.01		
102	1030	1.30	14.33		
114	925	1.35	12.90		
130	805	1.45	11.25		
145	725	1.60	10.08		
164	640	1.65	8.94		
186	565	1.75	7.86		
209	505	1.60	7.02		
232	455	1.75	6.32		
266	395	1.90	5.51		
297	355	2.1	4.94		
334	315	2.2	4.38		
381	275	2.4	3.85		
G42A DA160M4 113					
109	960	0.85	13.41		
123	855	0.90	11.90		
139	755	0.95	10.55		
156	675	1.00	9.39		
182	575	1.10	8.04		
207	510	1.20	7.09		
215	490	0.95	6.82		
242	435	1.05	6.05		
273	385	1.15	5.36		
307	340	1.25	4.77		
358	295	1.40	4.09		
406	260	1.50	3.61		

15.0 kW

G93A DA160L4 408					
9.3	15400	0.90	157.04		
10	14100	0.95	144.12		
11	12800	1.05	131.03		
12	11700	1.15	119.82		
14	10400	1.30	105.95		
15	9470	1.45	96.85		
17	8650	1.55	88.42		
18	7820	1.75	79.95		
21	6780	2.0	69.35		
24	5930	2.3	60.68		

Type	n2 [1/min]	T2 [Nm]	cG	i	~kg
G83A DA160L4 301					
14	10600	0.85	108.13		
15	9260	0.95	94.72		
17	8420	1.05	86.16		
19	7590	1.15	77.61		
21	6810	1.30	69.68		
25	5840	1.50	59.77		
28	5050	1.75	51.67		
38	3780	2.3	38.61		
42	3390	2.5	34.66		
G73A DA160L4 229					
23	6210	0.80	63.53		
27	5270	0.95	53.88		
31	4640	1.05	47.41		
36	4020	1.20	41.07		
39	3630	1.30	37.16		
43	3300	1.35	33.74		
49	2940	1.50	30.08		
57	2490	1.65	25.51		
67	2130	1.85	21.77		
G72A DA160L4 227					
56	2550	1.60	26.11		
62	2310	1.80	23.65		
68	2110	1.90	21.55		
78	1850	2.1	18.87		
85	1680	2.2	17.17		
95	1510	2.3	15.46		
106	1360	2.5	13.88		
G63A DA160L4 179					
52	2780	0.80	28.43		
58	2470	0.85	25.22		
66	2170	0.90	22.15		
G62A DA160L4 178					
61	2330	0.95	23.88		
67	2120	1.00	21.72		
75	1920	1.10	19.60		
82	1740	1.15	17.78		
95	1510	1.30	15.40		
105	1360	1.35	13.94		
116	1240	1.45	12.65		
130	1100	1.55	11.28		
153	935	1.70	9.57		
179	800	1.85	8.16		
196	730	1.65	7.47		
217	660	1.80	6.76		
239	600	1.90	6.13		
268	535	2.1	5.47		
316	455	2.3	4.64		
G52A DA160L4 149					
82	1750	0.80	17.86		
92	1570	0.85	16.01		
102	1400	0.95	14.33		
114	1260	1.00	12.90		
130	1100	1.10	11.25		
145	985	1.15	10.08		
164	875	1.20	8.94		
186	770	1.30	7.86		
209	685	1.20	7.02		
232	620	1.30	6.32		
266	540	1.40	5.51		
297	485	1.50	4.94		
334	430	1.65	4.38		
381	375	1.75	3.85		

Type	n2 [1/min]	T2 [Nm]	cG	i	~kg
18.5 kW					
G93A DA180MC4 413					
11	15800	0.85	131.03		
12	14400	0.95	119.82		
14	12800	1.05	105.95		
15	11700	1.15	96.85		
17	10700	1.30	88.42		
18	9640	1.40	79.95		
21	8360	1.65	69.35		
24	7320	1.85	60.68		
27	6450	2.1	53.46		
30	5950	2.3	49.31		
33	5430	2.5	45.02		
G83A DA180MC4 306					
15	11400	0.80	94.72		
17	10400	0.85	86.16		
19	9360	0.95	77.61		
21	8400	1.05	69.68		
25	7210	1.25	59.77		
28	6230	1.45	51.67		
33	5420	1.65	44.91		
38	4660	1.85	38.61		
42	4180	2.00	34.66		
49	3590	2.2	29.74		
57	3100	2.5	25.70		
G73A DA180MC4 235					
31	5720	0.85	47.41		
36	4950	0.95	41.07		
39	4480	1.05	37.16		
43	4070	1.10	33.74		
49	3630	1.20	30.08		
57	3080	1.35	25.51		
67	2630	1.50	21.77		
G72A DA180MC4 232					
62	2850	1.45	23.65		
68	2600	1.55	21.55		
78	2280	1.70	18.87		
85	2070	1.80	17.17		
95	1860	1.90	15.46		
106	1670	2.0	13.88		
123	1440	2.2	11.91		
142	1240	2.4	10.29		
160	1100	2.2	9.15		
164	1080	2.5	8.95		
176	1000	2.3	8.32		
195	905	2.5	7.50		
G62A DA180MC4 183					
75	2360	0.90	19.60		
82	2140	0.95	17.78		
95	1860	1.05	15.40		
105	1680	1.10	13.94		
116	1530	1.15	12.65		

Coaxiale Tandwiel Reductoren G

Type	n2 [1/min]	T2 [Nm]	cG	i	~kg
G52A DA180MC4					
114	1560	0.80	12.90		154
130	1360	0.90	11.25		
145	1220	0.95	10.08		
164	1080	1.00	8.94		
186	950	1.05	7.86		
209	845	0.95	7.02		
232	760	1.05	6.32		
266	665	1.15	5.51		
297	595	1.25	4.94		
334	530	1.30	4.38		
381	465	1.40	3.85		

22.0 kW

Type	n2 [1/min]	T2 [Nm]	cG	i	~kg
G93A DA180LC4					
12	17200	0.80	119.82		424
14	15200	0.90	105.95		
15	13900	1.00	96.85		
17	12700	1.05	88.42		
18	11500	1.20	79.95		
21	9950	1.35	69.35		
24	8700	1.55	60.68		
27	7670	1.80	53.46		
30	7070	1.90	49.31		
33	6460	2.1	45.02		
36	5840	2.3	40.70		

Type	n2 [1/min]	T2 [Nm]	cG	i	~kg
G83A DA180LC4					
19	11100	0.80	77.61		316
21	9990	0.90	69.68		
25	8570	1.05	59.77		
28	7410	1.20	51.67		
33	6440	1.40	44.91		
38	5540	1.55	38.61		
42	4970	1.65	34.66		
49	4260	1.85	29.74		
57	3690	2.1	25.70		
66	3200	2.3	22.34		

Type	n2 [1/min]	T2 [Nm]	cG	i	~kg
G82A DA180LC4					
78	2700	2.2	18.81		311
86	2440	2.4	17.01		

Type	n2 [1/min]	T2 [Nm]	cG	i	~kg
G73A DA180LC4					
36	5890	0.80	41.07		245
39	5330	0.85	37.16		
43	4840	0.95	33.74		
49	4310	1.00	30.08		
57	3660	1.15	25.51		
67	3120	1.25	21.77		

Type	n2 [1/min]	T2 [Nm]	cG	i	~kg
G72A DA180LC4					
62	3390	1.25	23.65		242
68	3090	1.30	21.55		
78	2710	1.45	18.87		
85	2460	1.50	17.17		
95	2220	1.60	15.46		
106	1990	1.70	13.88		
123	1710	1.85	11.91		
142	1480	2.00	10.29		
160	1310	1.85	9.15		
164	1280	2.1	8.95		
176	1190	1.95	8.32		
195	1080	2.1	7.50		
218	965	2.2	6.73		
254	830	2.4	5.77		

Type	n2 [1/min]	T2 [Nm]	cG	i	~kg
G62A DA180LC4					
82	2550	0.80	17.78		194
95	2210	0.85	15.40		
105	2000	0.95	13.94		
116	1810	1.00	12.65		
130	1620	1.05	11.28		
153	1370	1.15	9.57		
179	1170	1.25	8.16		
196	1070	1.15	7.47		
217	970	1.20	6.76		
239	880	1.30	6.13		
268	785	1.40	5.47		
316	665	1.60	4.64		
370	570	1.75	3.96		

30.0 kW

Type	n2 [1/min]	T2 [Nm]	cG	i	~kg
G93A DA200L4					
17	17100	0.80	88.42		495
19	15500	0.90	79.95		
21	13400	1.00	69.35		
24	11700	1.15	60.68		
28	10300	1.30	53.46		
30	9550	1.45	49.31		
33	8710	1.55	45.02		
36	7880	1.75	40.70		
42	6830	2.00	35.31		
48	5980	2.3	30.89		
54	5270	2.5	27.22		

Type	n2 [1/min]	T2 [Nm]	cG	i	~kg
G83A DA200L4					
29	10000	0.90	51.67		388
33	8690	1.00	44.91		
38	7470	1.15	38.61		
43	6710	1.25	34.66		
50	5760	1.40	29.74		
58	4980	1.55	25.70		
66	4320	1.70	22.34		

Type	n2 [1/min]	T2 [Nm]	cG	i	~kg
G82A DA200L4					
79	3640	1.65	18.81		383
87	3290	1.80	17.01		
100	2860	1.95	14.76		
115	2500	2.2	12.91		
130	2200	2.4	11.37		
151	1900	2.4	9.79		

Type	n2 [1/min]	T2 [Nm]	cG	i	~kg
G73A DA200L4					
58	4940	0.85	25.51		317
68	4210	0.95	21.77		

Type	n2 [1/min]	T2 [Nm]	cG	i	~kg
G72A DA200L4					
78	3650	1.05	18.87		314
86	3320	1.10	17.17		
96	2990	1.20	15.46		
107	2690	1.25	13.88		
124	2310	1.35	11.91		
144	1990	1.45	10.29		
162	1770	1.40	9.15		
165	1730	1.60	8.95		
178	1610	1.45	8.32		
197	1450	1.55	7.50		
220	1300	1.65	6.73		
256	1120	1.80	5.77		
297	965	1.95	4.99		
341	840	2.1	4.34		

Type	n2 [1/min]	T2 [Nm]	cG	i	~kg
37.0 kW					
G93A DA225SX4					
21	16600	0.80	69.35		552
24	14500	0.95	60.68		
28	12800	1.05	53.46		
30	11800	1.15	49.31		
33	10800	1.25	45.02		
36	9750	1.40	40.70		
42	8460	1.60	35.31		
48	7400	1.80	30.89		
54	6520	2.00	27.22		
63	5570	2.2	23.27		
73	4850	2.4	20.23		

Type	n2 [1/min]	T2 [Nm]	cG	i	~kg
G83A DA225SX4					
33	10800	0.85	44.91		444
38	9250	0.95	38.61		
43	8300	1.00	34.66		
50	7120	1.10	29.74		
57	6160	1.25	25.70		
66	5350	1.35	22.34		

Type	n2 [1/min]	T2 [Nm]	cG	i	~kg
G82A DA225SX4					
78	4510	1.35	18.81		441
87	4070	1.45	17.01		
100	3530	1.60	14.76		
114	3090	1.75	12.91		
130	2720	1.95	11.37		
151	2350	1.95	9.79		
167	2120	2.1	8.85		
192	1840	2.2	7.68		
219	1610	2.4	6.72		
249	1420	2.6	5.92		
291	1210	3.2	5.06		
335	1050	3.5	4.40		

45.0 kW

Type	n2 [1/min]	T2 [Nm]	cG	i	~kg
G93A DA225MX4					
28	15600	0.85	53.46		582
30	14400	0.95	49.31		
33	13100	1.05	45.02		
36	11900	1.15	40.70		
42	10300	1.30	35.31		
48	9000	1.50	30.89		
54	7930	1.65	27.22		
63	6780	1.80	23.27		
73	5890	2.00	20.23		

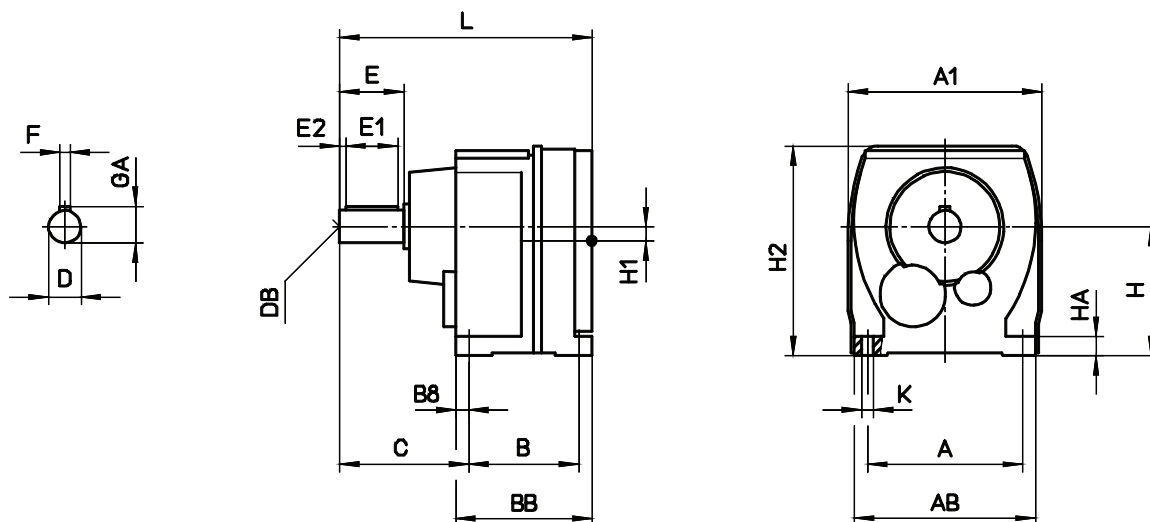
Type	n2 [1/min]	T2 [Nm]	cG	i	~kg
G92A DA225MX4					
85	5050	2.3	17.34		575
97	4450	2.5	15.26		
161	2670	2.5	9.15		

Type	n2 [1/min]	T2 [Nm]	cG	i	~kg
G83A DA225MX4					
43	10100	0.80	34.66		476
50	8660	0.90	29.74		
57	7490	1.00	25.70		
66	6510	1.10	22.34		

Type	n2 [1/min]	T2 [Nm]	cG	i	~kg
G82A DA225MX4					
78	5480	1.10	18.81		473
87	4960	1.20	17.01		
100	4300	1.30	14.76		
114	3760	1.45	12.91		
130	3310	1.60	11.37		
151	2850	1.60	9.79		
167	2580	1.70	8.85		
192	2240	1.85	7.68		
219	1960	2.00	6.72		
249	1720	2.1	5.92		
291	1470	2.6	5.06		
335	1280	2.9	4.40		

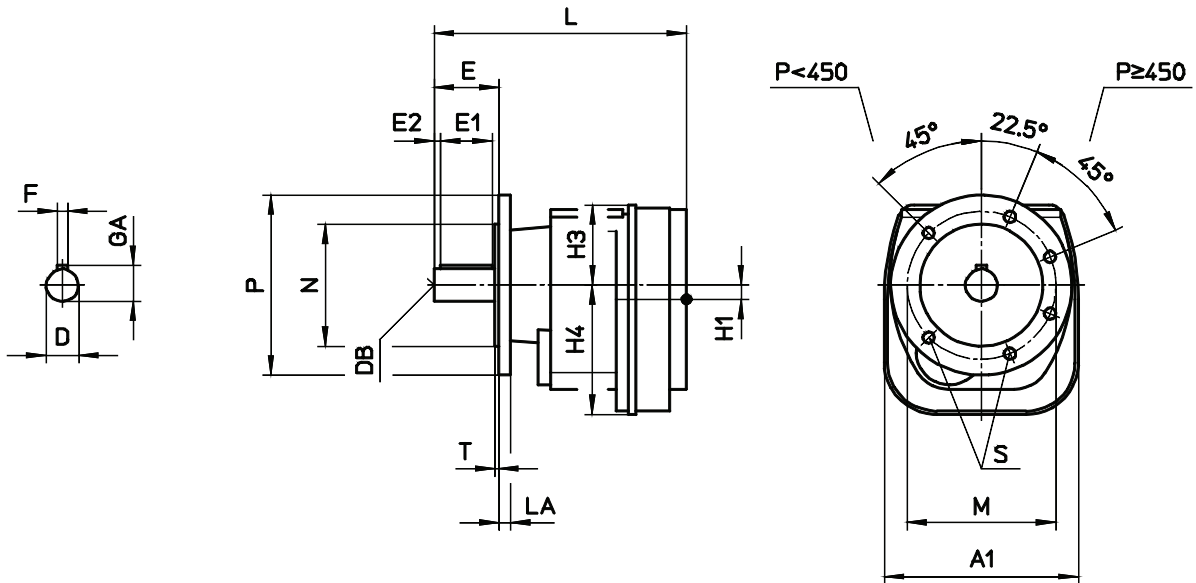
Maten

A - Voetuitvoering



	A	AB	A1	B	BB	B8	C	H	HA	H1	H2	K	L	D	DB	E	E1	E2	F	GA
G0	90	105	109	70	90	12.5	80	70-0.5	10	7	117.5	Ø6.6	151.5	Ø20k6	M6	40	32	4	6	22.5
G1	100	120	125	70	90	10	81	85-0.5	12	5	142.5	Ø6.6	163	Ø20k6	M6	40	32	4	6	22.5
G2	120	140	150	85	105	10	100	100-0.5	18	11	162.5	Ø9	195	Ø25k6	M10	50	40	5	8	28
G3	135	160	177	110	135	12.5	116.5 126.5	120-0.5	24	11	192.5	Ø11	234 244	Ø30k6 Ø35k6	M10 M12	60 70	50 60	5 5	8 10	33 38
G4	170	200	208	135	165	15	146	145-0.5	30	16	233	Ø13.5	281	Ø40k6	M16	80	70	5	12	43
G5	215	250	259	170	205	17.5	181	180-0.5	35	20	289.5	Ø17.5	335	Ø50k6	M16	100	80	10	14	53.5
G6	255	300	309	200	245	23	207	220-0.5	45	20	354.5	Ø22	392	Ø60m6	M20	120	100	10	18	64
G7	290	350	360	280	330	25	239	250-1	55	28.5	401.5	Ø26	485	Ø75m6	M20	140	125	7.5	20	79.5
G8	330	400	412	330	395	32.5	290	290-1	65	32	464	Ø33	585.5	Ø90m6	M24	170	140	15	25	95
G9	390	460	466	400	480	40	335	340-1	75	39	534	Ø39	695	Ø110m6	M24	210	180	15	28	116

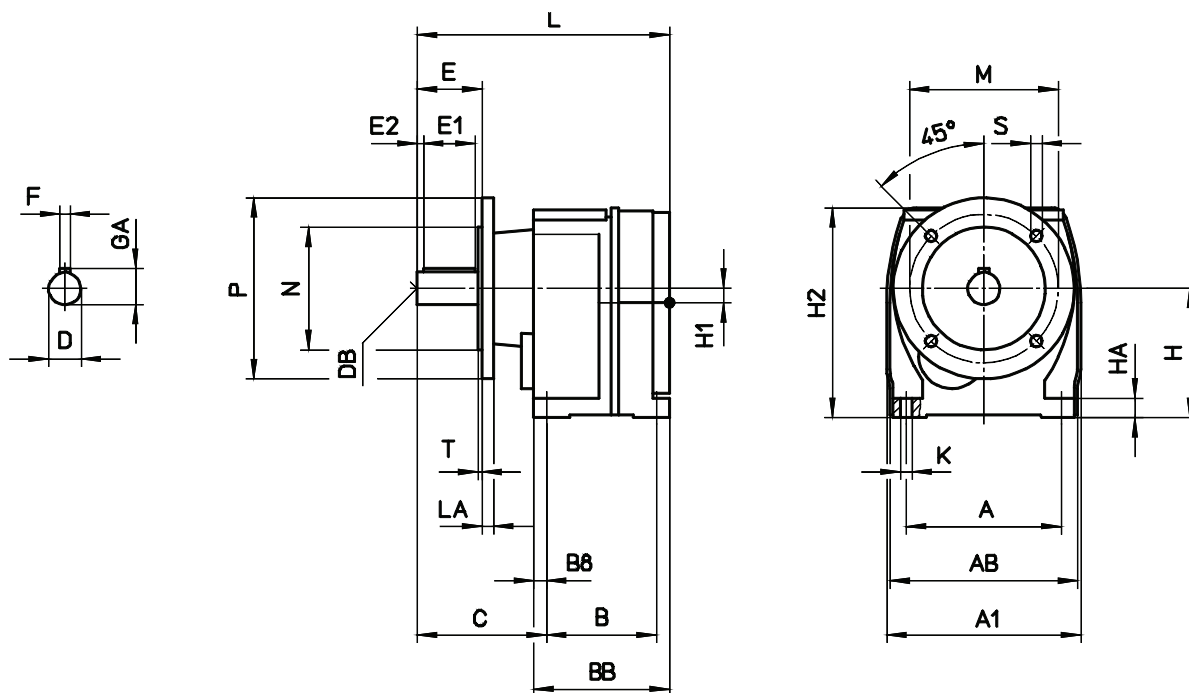
C - Flensuitvoering



	A1	H1	L	H3	H4	D	DB	E	E1	E2	F	GA
G0	109	7	151.5	47.5	71	Ø20k6	M6	40	32	4	6	22.5
G1	125	5	163	57.5	85	Ø20k6	M6	40	32	4	6	22.5
G2	150	11	195	62.5	100.5	Ø25k6	M10	50	40	5	8	28
G3	177	11	234	72.5	120	Ø30k6 Ø35k6	M10 M12	60 70	50 60	5 5	8 10	33 38
G4	208	16	281	88	144.5	Ø40k6	M16	80	70	5	12	43
G5	259	20	335	109.5	179	Ø50k6	M16	100	80	10	14	53.5
G6	309	20	392	134.5	218.5	Ø60m6	M20	120	100	10	18	64
G7	360	28.5	485	151.5	248.5	Ø75m6	M20	140	125	7.5	20	79.5
G8	412	32	585.5	174	289	Ø90m6	M24	170	140	15	25	95
G9	466	39	695	194	338.5	Ø110m6	M24	210	180	15	28	116

	M	N	P	LA	T	S
G0	Ø100	Ø80 j6	Ø120	8	3	Ø6.6
G1	Ø100	Ø80 j6	Ø120	8	3	Ø6.6
	Ø115	Ø95 j6	Ø140	9	3	Ø9
G2	Ø115	Ø95 j6	Ø140	9	3	Ø9
	Ø130	Ø110 j6	Ø160	9	3.5	Ø9
G3	Ø130	Ø110 j6	Ø160	9	3.5	Ø9
	Ø165	Ø130 j6	Ø200	10	3.5	Ø11
G4	Ø165	Ø130 j6	Ø200	10	3.5	Ø11
G5	Ø215	Ø180 j6	Ø250	11	4	Ø13.5
G6	Ø265	Ø230 j6	Ø300	12	4	Ø13.5
G7	Ø300	Ø250 h6	Ø350	13	5	Ø17.5
G8	Ø400	Ø350 h6	Ø450	16	5	Ø17.5
G9	Ø400	Ø350 h6	Ø450	16	5	Ø17.5

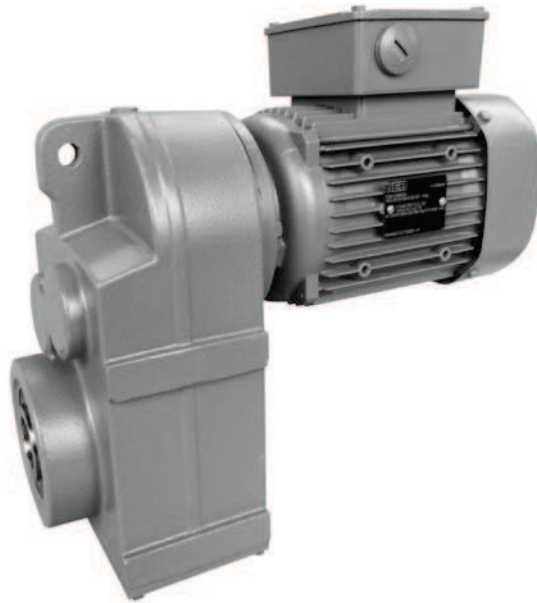
E - Voet-flensuitvoering



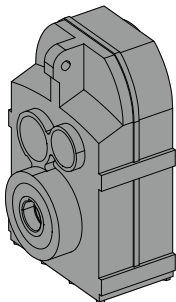
	A	AB	A1	B	BB	B8	C	H	HA	H1	H2	K	L	D	DB	E	E1	E2	F	GA
G0	90	105	109	70	90	12.5	80	70-0.5	10	7	117.5	Ø6.6	151.5	Ø20k6	M6	40	32	4	6	22.5
G1	100	120	125	70	90	10	81	85-0.5	12	5	142.5	Ø6.6	163	Ø20k6	M6	40	32	4	6	22.5
G2	120	140	150	85	105	10	100	100-0.5	18	11	162.5	Ø9	195	Ø25k6	M10	50	40	5	8	28
G3	135	160	177	110	135	12.5	116.5 126.5	120-0.5	24	11	192.5	Ø11	234 244	Ø30k6 Ø35k6	M10 M12	60 70	50 60	5 5	8 10	33 38
G4	170	200	208	135	165	15	146	145-0.5	30	16	233	Ø13.5	281	Ø40k6	M16	80	70	5	12	43
G5	215	250	259	170	205	17.5	181	180-0.5	35	20	289.5	Ø17.5	335	Ø50k6	M16	100	80	10	14	53.5

	M	N	P	LA	T	S
G0	Ø100	Ø80 j6	Ø120	8	3	Ø6.6
G1	Ø100	Ø80 j6	Ø120	8	3	Ø6.6
	Ø115	Ø95 j6	Ø140	9	3	Ø9
G2	Ø115	Ø95 j6	Ø140	9	3	Ø9
	Ø130	Ø110 j6	Ø160	9	3.5	Ø9
G3	Ø130	Ø110 j6	Ø160	9	3.5	Ø9
	Ø165	Ø130 j6	Ø200	10	3.5	Ø11
G4	Ø165	Ø130 j6	Ø200	10	3.5	Ø11
G5	Ø215	Ø180 j6	Ø250	11	4	Ø13.5

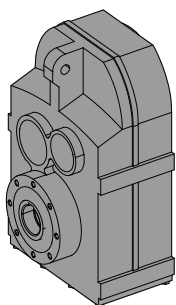
Parallel Reductoren F



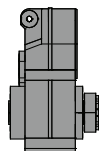
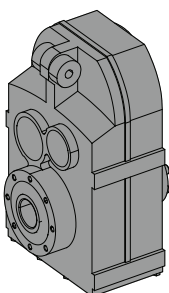
Uitvoering



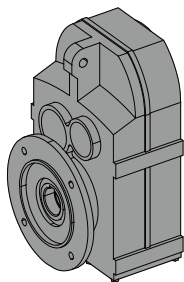
Opsteek uitvoering
Holle as met spiebaan
Voorbeeld: F42A



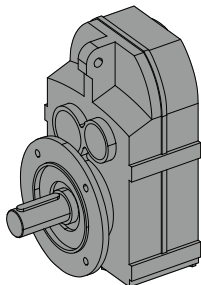
Opsteek uitvoering
Holle as met spiebaan
Voorbeeld: F53B



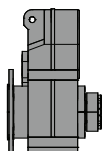
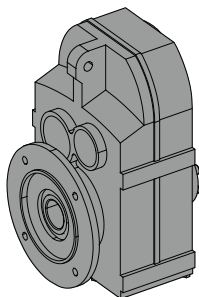
Opsteek uitvoering
Holle as met klembus
Rubber buffers
Voorbeeld: F32BSG



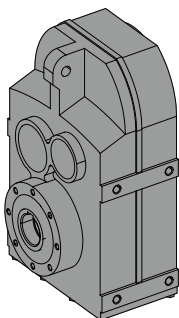
Flensuitvoering
Holle as met spiebaan
Voorbeeld: F33C



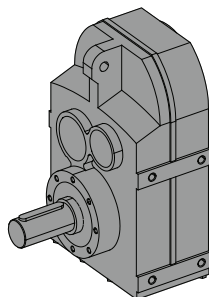
Flensuitvoering
Uitgaande as met spie
Voorbeeld: F42CV



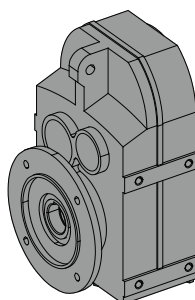
Flensuitvoering
Holle as met klembus
Voorbeeld: F52CS



Opsteekuitvoering met zijdelings extra montagegaten
Holle as met spiebaan
Voorbeeld: F43D



Opsteekuitvoering met zijdelings extra montagegaten
Uitgaande as met spie
Voorbeeld: F32DV



flensuitvoering met zijdelings extra montagegaten
Holle as met spiebaan
Voorbeeld: F42E